



LRH-Homes

Care • Comfort • Compassion

Oaklands News

The News Letter of London Residential Healthcare.

WHO'S WHO

Director	Jag Grewal
Director	Pam Grewal
Operations Manager	Michelle Shann
Nursing Manager	Ann McCulloch
Social Activities	Angie Houghton
Administrator	Elaine Coshott
Nurses include	Tula Mdlalose, Sinimol Joseph, Jessy Varghese and Alison Davis
Healthcare Assistants	Beverley Morris, Pat Cousins, Sophie Mathews, Amanda Morris to name a few!!
Catering	Sheena Reid, Laura Philpott, Sarah Berrett
Housekeeping	Eva Chrzanowska
Laundry	Georgina Curthoys
Maintenance	Chris Chiddle

These are just a few of our valued members of staff who work together to make Oaklands House a *Home!*

Welcome!

Firstly I would like to welcome you to our very first newsletter. We will bring out a new edition every three months and will always welcome any ideas and contributions.

I would also like to take the opportunity to welcome our new residents Reg Lacey and Everline Endersby, we hope that they settle in happily at Oaklands House.

Christmas, was once again a very busy time for us and we would like to thank all of our staff and visitors for making the festive period so enjoyable for our residents. We will be organising some day trips shortly so look out for information on the forthcoming events. We hope you enjoy reading Oaklands News.

Ann and all the staff at Oaklands



As the weather is still a little inclement unfortunately there are no outings arranged for the immediate future, however we hope to arrange some shortly since the trips on the Solent were enjoyed by everybody so much last year.



Residents Birthdays

- ◆ Joy O'Hara *February 12th*
- ◆ Olive Such *February 16th*
- ◆ Mary Durham *March 24th*
- ◆ Graham Bowen *March 31st*

We wish them all a very Happy Birthday. If any resident or relative has any requests for something that would make the resident's birthday that extra bit special then please let Matron know and we'll do our best to oblige!

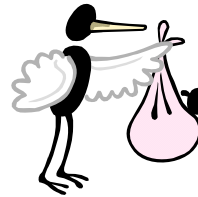
Themed Menus

We will be holding themed menus with lots of exciting foods and drinks on the following days:

- ◆ Shrove Tuesday
- ◆ Valentine's Day
- ◆ Chinese New Year
- ◆ St. Patrick's Day



- ◆ It goes without saying we had a Burn's Supper in January, this was enjoyed by all.
- ◆ Piers, the organ player continues his visits every fortnight, as does Joseph, our guitar player.



Congratulations to Shyby on the birth of her baby daughter, we look forward to her return from India.

A warm welcome to the four new members of staff

- ◆ Elaine *Administrator*
- ◆ Liji *Nursing staff*
- ◆ Esterlina *Nursing Staff*
- ◆ Swapna *Nursing Staff*
- ◆ Good luck to the three members of staff who have recently commenced NVQ training.

Views and Ideas

We hope you enjoyed reading this edition of Tilford News. Please don't be shy to get involved. We are always interested in articles to add so please feel free to contribute and we will endeavour to include your items in our next edition. Until then, please do take care!!!



Poetry Corner

LEISURE

By
William Davies

What is this life if, full of care,
We have no time to stand and stare.

No time to stand beneath the boughs
And stare as long as sheep or cows

No time to see, when woods we pass,
Where squirrels hide their nuts in grass

No time to see, in broad daylight,
Streams full of stars, like skies at night.

No time to turn at Beauty's glance
And watch her feet, how they can dance.

No time to wait till her mouth can
Enrich that smile her eyes began.

A poor life this if, full of care,
We have no time to stand and stare.



If you have any suggestions about future poems to be included in the newsletter then please pass the details on to either Ann or Elaine.

LRH-Homes

As many of you will be aware the home has recently been purchased by LRH-Homes. We all look forward to working with them to improve the home and to continue to provide the highest levels of care, we have included a bit of background information below.

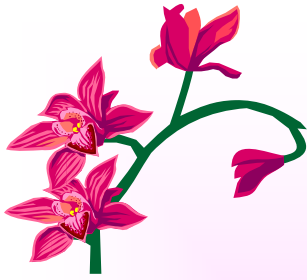


INTRODUCTION: At LRH-Homes, we have continued to maintain our strong sense of core values. Our primary objective has always been:

“to strive for excellence in providing an ethically sound, individualised, highest quality of nursing care for older people in a homely environment with the support of well trained and highly motivated staff”.

Having started in 1997 with one care home we have now successfully expanded to operate a number of homes across the South East of England. At the heart of this success has been the recruitment and development of similarly minded, hard working staff who share our goals and aspirations. We aim to nurture an environment of mutual respect and cooperation amongst all our staff to provide the highest possible level of care to our residents

Further information can be found on the website www.lrh-homes.com it is well worth a visit as it contains information about the company, Oaklands House and this newsletter is also available to download.



True Beauty Lies Within

**You look at my face, you see what you like
Red pouting lips, a smile full of life
A golden wisp curled, across deep sultry eyes
Sensuous blushes, on cheeks soft as pearls
But you think that I'm only a cute little girl
But beauty, real beauty, lies deep within
Where treasure unopened, waits patiently to win
A heart that will notice, the qualities that charm
Goodness and kindness, that won't do you harm
Where you shall discover, a heart, soul, and mind
Always endearing, that won't fade over time
For many shall notice a face that is lovely
But few ever find the heart is more comely
Never to realize, the soul's true delight
Of love's only bounty, a spirit shining bright
Always endearing, this prize is pure gold
Something to cherish, something to hold
Tender and precious, each gem can be found
Deeply encased, it wears like a crown
Only those who look deeper, will find such a treasure
Where beauty infused, shall live on forever**



**Oaklands House Nursing Home
Allington Lane
West End, Southampton
SO30 3HP
Tel: 02380 472581
Fax: 02380 471272
Email : oaklands@lrh-homes.com**



LRH-Homes

Care • Comfort • Compassion