



LRH-Homes

Care • Comfort • Compassion



Tilford Park News

The News Letter of London Residential Healthcare.

WHO'S WHO

Director	Jag Grewal
Director	Pam Grewal
Operations Manager	Ron Dixson
Home Manager	Sharon Lambourne
Social Activities	Wendy
Administrator	Vanessa
Nurses include	Sharada, Kochurani, Mary, Celin, Jincy, Buddhi
Healthcare Assistants	Andrew, Anita, Karen, Soji, Sarah, Sharon, Boyd, Faye Sumesh, Roy, Sebastian, Karen, Dena, Michelle
Catering	Angela and Karen
Housekeeping	Anil, Dilli and Denise
Laundry	Lyn
Maintenance	Richard

These are just a few of our valued members of staff who work together to make Tilford Park a *Home*.



Welcome!



Firstly I would like to welcome you to our newsletter, it is published every three months we always appreciate any ideas and contributions. Summer has come and we are planning lots of activities to keep the home busy. we would like to thank all of our staff and visitors for making the festive period so enjoyable for our residents during the past few months. We will be organising some day trips shortly so look out for information on the forthcoming events. We hope you enjoy reading Tilford Park News..

From all the staff at Tilford Park.

Residents Birthdays

Happy Birthday to our residents who had or will have a birthday soon.

June

Dicky Day 8th

Peter Macdonald 15th

June Pearcey 30th



July

Elsie Smith 4th

Eida Melnylzyn 9th

Gerry Medcalf 14th

September

Ken Watkin 11th

Elsie Maiden 12th

Please remember if there is anything that the staff here at Tilford can do to make the resident's birthday that extra bit special then please let the Home Manager know and we will do our best to oblige!



Welcome

Some of you may have met our new Home Manager, Sharon Lambourne who joined us mid April. Sharon is a registered nurse and midwife. Sharon has been a service Manager for the Hampshire County Council where she was involved with people with Dementia. More recently she was Head of Elderly Care at Sussex Health Care.



Social Activities

Trabadour Productions came to entertain our residents with a musical show with favourite songs from the 1950's.

Music for Health comes once a month it is an afternoon of music and movement. Residents also have the opportunity to play musical instruments.

Bella Fashions came to do a fashion show with summer clothing. Mick will be returning towards the end of the year with his winter collection.

Assist continue to hold their monthly church service on the first Friday of every month.

Forthcoming events

11th June 2008

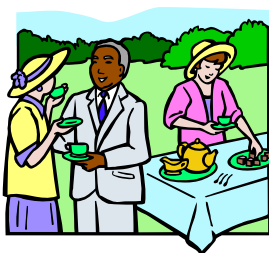
South Farnham School are coming to do maypole dancing.

18th June 2008

Christine Jones our Roaming Reader will be coming to entertain the residents with poetry and short stories.

25th June 2008

Residents will be going for a lunch time picnic at Alice Holt Forest (weather permitting). Failing that we will be going to a local garden centre.



6th July 2008

We will be holding our annual summer fete from 2-4pm.

18th July 2008

Millers Ark will be bringing their farm animals.

Date for your diary

Sunday 22nd June 2008 at 2pm

Friends of Tilford Park Meeting. This is open to all so please come along.

Managers thoughts

I would like to thank all the residents, relatives and visitors for their continuing support, which makes Tilford a *Home* and remember my door is always open. I wish to say a big thank you to all the staff for their hard work and effort in maintaining high standards.



Views and Ideas

Thank you all for your continuing support and we hope you enjoyed reading this copy of Tilford Park News. We at Tilford Park look forward to the next edition, which will be equally enjoyable but with more articles from our readers, so please write in, so until we meet again do take care.

Small tips

We may not have much time to spare

To pause along the way

But what a difference we could make

To someone's lonely day,

A cheerful voice, a kindly chat,

The thoughts that understand

These simple things that make us

Glad to lend a helping hand



Sonnet: Good Old-Friendship



**The love we bear as friends is deep-rooted;
 The tussles we have had aren't worth a pie;
 Our altercations are but else-mooted;
 Until the end, our friendship should not die.**

**Let not our foes plant 'land-mines' in our place;
 Let not our enemies take advantage;
 Let not the middlemen distract our gaze;
 We have a common worthy heritage.**

**Our friendship's old by quarter century!
 Some wait to see it fall apart somehow;
 Misunderstandings, better we bury;
 Our unity is precious for us now.**

**The opportunists try to break our peace;
 Our friendship's strong and never will it cease.**

Dr John Celes



Tilford Park Nursing Home
 Grange Road
 Tilford, Nr: Farnham
 Surrey
 GU10 2DG
 Tel: 01252 792543
 Fax: 01252 795229
 Website: www.lrh-homes.com
 Email: tilford@lrh-homes.com



LRH-Homes
 Care • Comfort • Compassion